



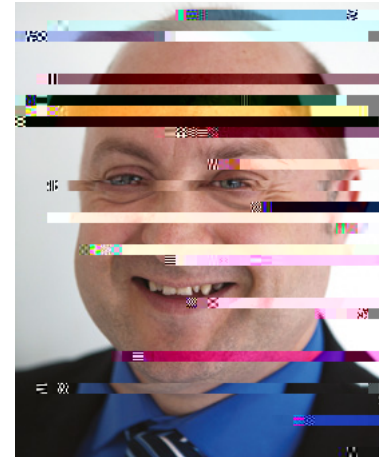
EAST MIDLANDS TOP 500 COMPANIES 2020

FOREWORD

PROFESSOR DAVID MBA,
PRO VICE-CHANCELLOR RESEARCH & ENTERPRISE

I am pleased to introduce the first report on The East Midlands Top 500 Companies (EM Top 500) on behalf of De Montfort University. The EM Top 500 is a new index which celebrates the business success of the East Midlands as a region with a strong, diverse and resilient range of firms.

Planned before the COVID-19 pandemic, the index



SCOTT KNOWLES,
CHIEF EXECUTIVE, EAST MIDLANDS CHAMBER
(DERBYSHIRE, NOTTINGHAMSHIRE, LEICESTERSHIRE)

It's long been recognised that the East Midlands is the engine room of the UK's economy. We are a manufacturing powerhouse, a hotbed of innovation and advanced technology and a logistics hub through which trade flows in all directions, over borders and into the global marketplace.



Introduction: what is the purpose of the Top 500?	4
Method: how is the Top 500 compiled?	5
Who is in the Top 500?	6
Boots UK Ltd	7
Barratt Developments PLC	8
Toyota	9
Business Sectors	10
Greencore	12
Bowmer and Kirkland Ltd	13
Next PLC	14
Aceso Healthcare Group Ltd	15
Business Resilience	16
Rolls-Royce	18
Leicester City Football Club	19
Proact IT UK Ltd	

INTRODUCTION: WHAT IS THE PURPOSE OF THE TOP 500?

The East Midlands Top 500 Companies 2020 is a new index which celebrates the business success of the East Midlands as a region with a remarkably strong, diverse and resilient range of firms.

For the first time we can see the range and strength of our leading businesses in the East Midlands, in the 'Three Counties' of Derbyshire, Leicestershire and Nottinghamshire areas covered by the East Midlands Chamber. These businesses are at the heart of the East Midlands economy and are high on the list of those most likely to drive growth and create jobs in the future. Their prosperity affects not only their workforces, supply chains and the communities around them, but ultimately everyone in the region.

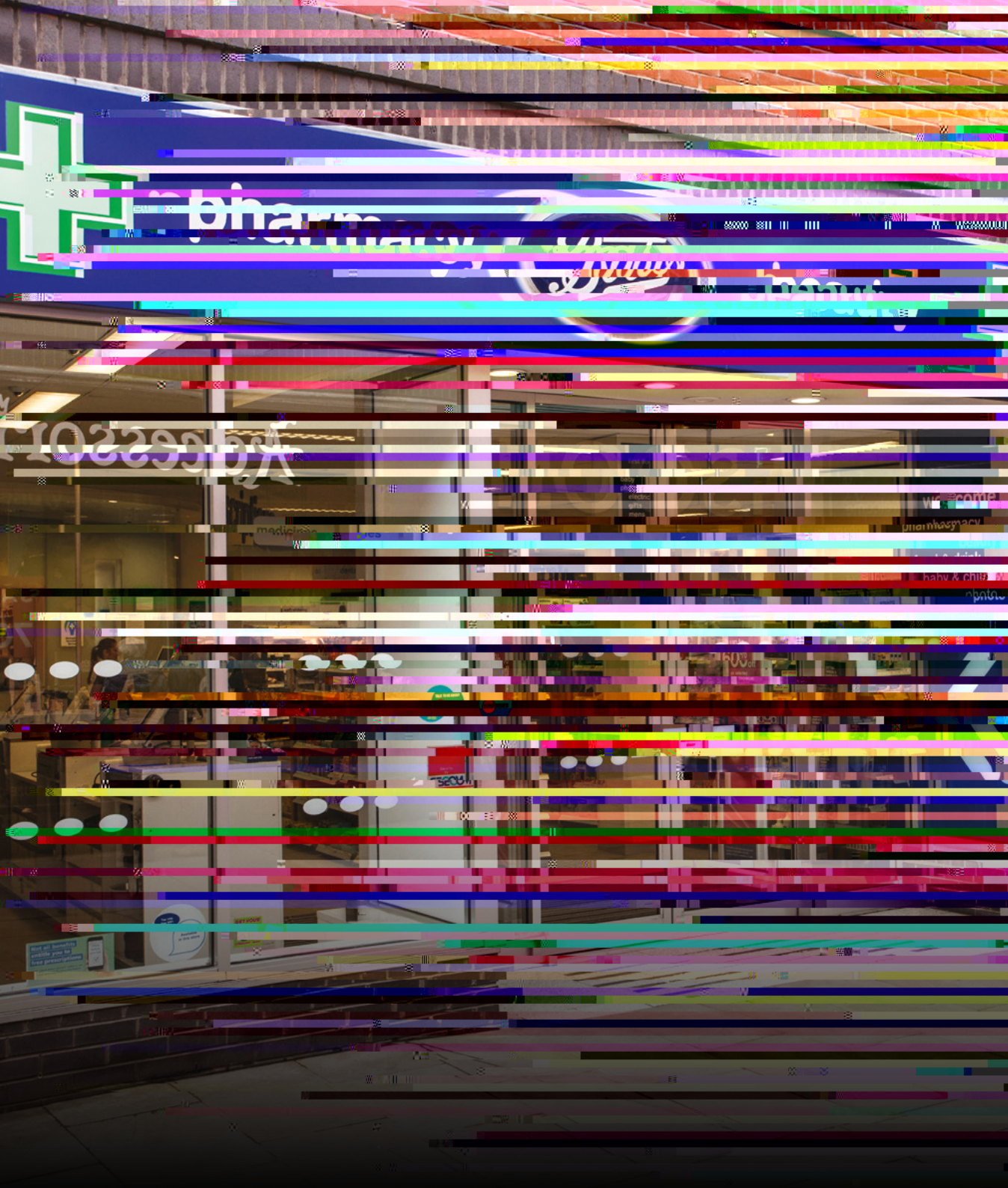
The index is part of a proposed regional approach for sharing business intelligence to support economic development across the region, led by East Midlands Chamber. The East Midlands has lacked a single organisation which brings together the economic and business intelligence for the region. This puts the East Midlands at a disadvantage with city-regional unified authorities, such as the West Midlands, which are able to integrate shared intelligence much more effectively, for example via the Chambers' network, Black Country Economic Intelligence Unit and WM-REDI institute.

Whilst the East Midlands is a partner in the Midlands Engine Economic Observatory, it also needs to develop its own capacity for business intelligence which can inform

METHOD: HOW IS THE

WHO IS IN THE TOP 500?

The Top 10 companies are led by Boots as an internationally-renowned brand in pharmacy-led health and beauty retail, owned by Walgreens Boots Alliance. Boots, Next and Sports Direct show the strength of the retail sector in the index, with other major retailers including Wilko and Dunelm also in the Top 20.



BOOTS UK LTD

Boots is the leading East Midlands Top 500 Company by turnover, based on its 2017 performance. As a long-established retail brand, Boots leads the retail pharmacy international division of owning group Walgreens Boots Alliance, the first global pharmacy-led, health and wellbeing enterprise. With staffing of around 40,000 and 2,465 retail outlets in the United Kingdom, these form over half of the Boots 4,605 total outlets across eight countries.

As the region's leading retailer, Boots demonstrated its commitment to





TOYOTA

It was in 1989 that Japanese car manufacturing giant Toyota announced plans to establish its first European factory at Burnaston, near Derby – and in December that year it established Toyota Motor Manufacturing (UK).

But it was not until 1992 that the first Burnaston-built car rolled off the production line. Today, the factory manufactures the all-new Corolla hatchback and Touring Sports, with most of its output exported to mainland Europe. The majority of the cars manufactured at Burnaston are hybrids, running on a combination of petrol and electricity. The powertrains are manufactured at Toyota's engine-making plant at Deeside, in North Wales. Both Deeside and Burnaston represent a total investment by Toyota of £2.75 billion.

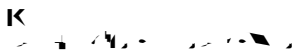
Whilst the Toyota plant in Burnaston ceased production on March 18 2020 because of the COVID-19 pandemic, production resumed on 26 May after introducing extensive health and safety measures to protect the workforce.

/500

BUSINESS SECTORS



The Top 10 East Midlands businesses show the balance of retail, advanced manufacturing, health, housing and automotive sectors. Looking the entire Top 500 companies, these sectors remain at the core of the economy, but others are also evident. The report looks firstly at the industrial sectors including manufacturing, construction, business services, transport and logistics. It then explores at customer-facing sectors, which consumers interact with directly, including retail, healthcare, hospitality, leisure and tourism.



A sectoral analysis of the Top 500 shows it is distributed across 41 industrial sectors. This can be narrowed down further by aggregating all the manufacturing into one sector grouping. There is a also a range of business services which have been grouped together. Finally there is a diverse group of 'other sectors' with 52 companies in total.

The largest sector by value of sales is manufacturing, aggregated (£24.2bn), followed by retail (£19.7bn) as the largest employer, automotive trade (£15.6bn), business services (£14.8bn) construction (£10bn), and wholesale (£5.4bn). Taking retail and wholesale together is valued at £25.1bn, slightly larger than manufacturing.

This shows the broad base and diversity of the business sectors in the region as well as the significant areas of concentration.

The high level of manufacturing activity across these sectors is a strength in high value-added activity, exporting and supporting supply-chains. However, the impact of the COVID-19 pandemic is being felt by even the largest companies in aerospace, such as Rolls-Royce and Gardner Aerospace. Some manufacturers have found increased demand opportunities in the period, such as in supplying PPE, sterilants and protective screens for organisations.

Looking at the food and drink manufacturing sector, this includes 21 of the Top 500, employing over 24,000 people, with a value over £4bn. There are both major producers, such as Greencore and Samworth Brothers, and well-known names including Pukka Pies, Delifrance, and Swizzells Matlow, known for their confectionery. Food businesses have had to make many changes in their working practices, supply chains and customer relations. Overall, the food and drink sector adapts quickly to changes such as major reductions in prepared sandwiches and lunches, and demand recovers over time.

re.GS0 gsq3.5.89 1 362(07the6.4961 cm1.89 m24889)-a1288450(G)56



GRENCORE

Greencore is a leading manufacturer of convenience food, based in North Derbyshire, led by Irish CEO Patrick Coveney. The company was set up in 1991 following the privatisation of the former state-owned Irish Sugar, moving into convenience foods in 2001 and exiting the sugar business in 2006. Greencore's acquisition strategy triggered tremendous growth in the UK before entering the US market in 2008, selling this operation on 2018. In 2011, it switched its primary listing from the Irish Stock Exchange to London. Group revenue of £1.5bn and increased revenue growth of 1.6% over 2019 shows Greencore's track record of performance with strong margins and investor returns.

Greencore is the market leader in the majority of its categories, with 2,300 products across 20 categories in 40 locations across the UK, the food giant delivers 7,500 consignments direct to stores daily.

Greencore's competitive edge stems from its passion for great food, deep customer relations, leadership in 'food-to-go', innovation and technology networks. food-nmeamand incapabilive dapotion steencore isr grfurnsgr



BOWMER AND KIRKLAND LIMITED

Founded as a partnership in 1923 by Alfred Bowmer and Robert William Kirkland, Bowmer and Kirkland is one of the most financially secure privately-owned companies in the UK construction sector. The company handles key projects from £1m to more than £130m across its construction, construction related services and homeland security subsidiaries. Turnover of £938 million, group profit before tax of £54.5 million and 9% increase in group net assets provide Bowmer and Kirkland with its strong fiscal base. Although the Bowmer connection ended in 1968, the 25 companies in the group have a Board including the fourth generation of the Kirkland family.

One of the main factors that enabled such transformative growth is Bowmer and Kirkland's commitment to client satisfaction, with this culture of connection deeply entrenched in its values and roots as a family owned business. This commitment drives the company's 1,400 staff providing a wide range of specialized services across its ten market sectors.

With a regional construction team quick to adapt to changing market and client requirement, 63% of the £3 billion secured in projects over the past five years came from repeat orders by satisfied clients. Major projects include



ACESO HEALTHCARE GROUP LTD

ACESO Healthcare Group Holdings Limited is the parent company of Nottingham Rehab Ltd, trading as NRS Healthcare, an award-winning market leader providing products and services designed to support independent living. The Complete Care Network Ltd was acquired and absorbed into NRS in 2019.

The company is a major contractor providing wheelchair, telecare, clinical and assistive technology-enabled care and occupational therapy services for Local Authorities and the NHS. They are growing in the expanding market for outsourced health contracts for Integrated Community Equipment Service (ICES) and these specialisms.

NRS Healthcare offers a range of over 3,500 products including daily living aids, mobility equipment, disability equipment and therapeutic resources for older people, disabled adults and children. During the COVID-19 pandemic, the company experienced unprecedented demand for its products. They adopted an efficient communication system of email and text messaging to ensure a physical contactless 'white gloves' delivery for their 10 million customers in the UK and on-time delivery wherever possible.

NRS Healthcare support charities in the UK and overseas, and won the Best Contribution to the Community at the 2018 British Healthcare Trades Association Awards, for their collaborative work on "The Phoenix Project" with Warrington Disability Partnership and St Marks Universal Copts Care.

BUSINESS RESILIENCE

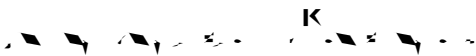


This section looks at business resilience and how companies in the Top 500 are starting to bounce back from the pandemic.

The East Midlands Top 500 Businesses are a major resource for regeneration and future growth in the region. In Summer 2020 all businesses face massive economic and social challenges resulting from the COVID-19 pandemic and lockdown. These are having huge effects on almost every business. Yet already there are signs of how businesses are responding and preparing for the future.

Immediately, for many businesses the imperative is survival. In some cases, investment plans are being cut back which may constrain future growth. For businesses with a focus on conserving cash with lower revenues, high costs and growing debt, this is understandable. Businesses are working hard on cost reduction and lean thinking.

Sadly, job losses over the coming months as furlough schemes end, are a growing reality. How can these jobs be replaced? Future job creation will be vital, and ideally these will be high productivity, high value jobs, making optimal uses of technology.

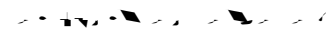


In recent months, online business activity has boomed, with meetings, trading, retail, learning and many other activities in the virtual space replacing face-face. Is this the new normal? Many activities will not revert quickly or at all to how they used to do business, but will expand by using new and online channels.

Innovation in products, services and customer experience is the key. Resourceful businesses are finding new ways to create value for their customers, pivoting from moribund channels to new opportunities such as personalised services and home delivery. Some clothing and other manufacturing firms are reshoring operations back to the UK. There are examples of businesses such as NEXT and Leicester City FC making strategic investments for future growth.

Businesses with high-demand products and services have adapted to working with limited resources, with examples such as perspex shielding for customer service facilities, PPE and anti-infection production. Many also stepped up to support their communities and key workers in imaginative and caring ways.

Our businesses are already starting to bounce back and recover. Hard choices are being made, even in the very biggest and best, such as Rolls-Royce, to adapt to future conditions. The Top 500 will see rising, and possibly falling stars, as well as new entrants in coming years.



The reopening of 'non-essential' retail stores from 15 June was welcome news for the East Midlands retail businesses, with 28 businesses employing over 150,000 nationwide. Whilst some such as Boots and Wilko remained open, other major businesses were keen to take advantage of pent-up demand. NEXT phased reopening of its chain of 150 stores. Other home and fashion businesses, including Dunelm and Joules, were keen to resume trading. Sports Direct as a major retail group heavily invested in House of Fraser as well as the core sportswear brands, aimed to make up lost business.

Whilst High Streets and retail centres reported brisk trading at the start, over half of shoppers remaining wary of resuming face-face contact and social distancing also limited sales capacity. With gloomy economic news about a prolonged recovery, continuing job losses in the High Street sector are likely as online sales grow.



East Midlands businesses providing all aspects of protection against COVID-19 were positioned for healthy sales during the pandemic. Steris Ltd is a worldwide supplier of infection control solutions and other products vital to combat the virus.

Health and residential care providers have been deeply affected by the pandemic. These include MHA (Methodist Housing Association) which featured on BBC Newsnight to relate their experience in managing the pandemic in their care homes, and Heathcotes Group which runs 72 residential care facilities with person-centred care for adults.

Businesses able to provide physical protection have seen strong demand. Oadby Plastics, UK's leading independent plastics supplier, saw demand for acrylic and other materials for protection screens in retail and customer-facing applications as well as face visors, rise strongly. This led them to introduce new systems to enable them to respond efficiently and safely to this demand.



The East Midlands is home to 40 major vehicle dealerships, employing over 30,000 people, and including famous names such as Sytner Group (BMW), Pendragon, Pentagon and Motorpoint, as well as a number of specialist suppliers. With reopening of salesrooms from 1 June, social distancing was in place to protect customers and staff. Vehicle sales fell by 90% during the lockdown, with a record number of unsold vehicles in stock nationally and many held in the region. Dealers are keen to meet pent-up demand for new cars, and with automotive production also starting up, there

will be a significant increase in vehicle sales.





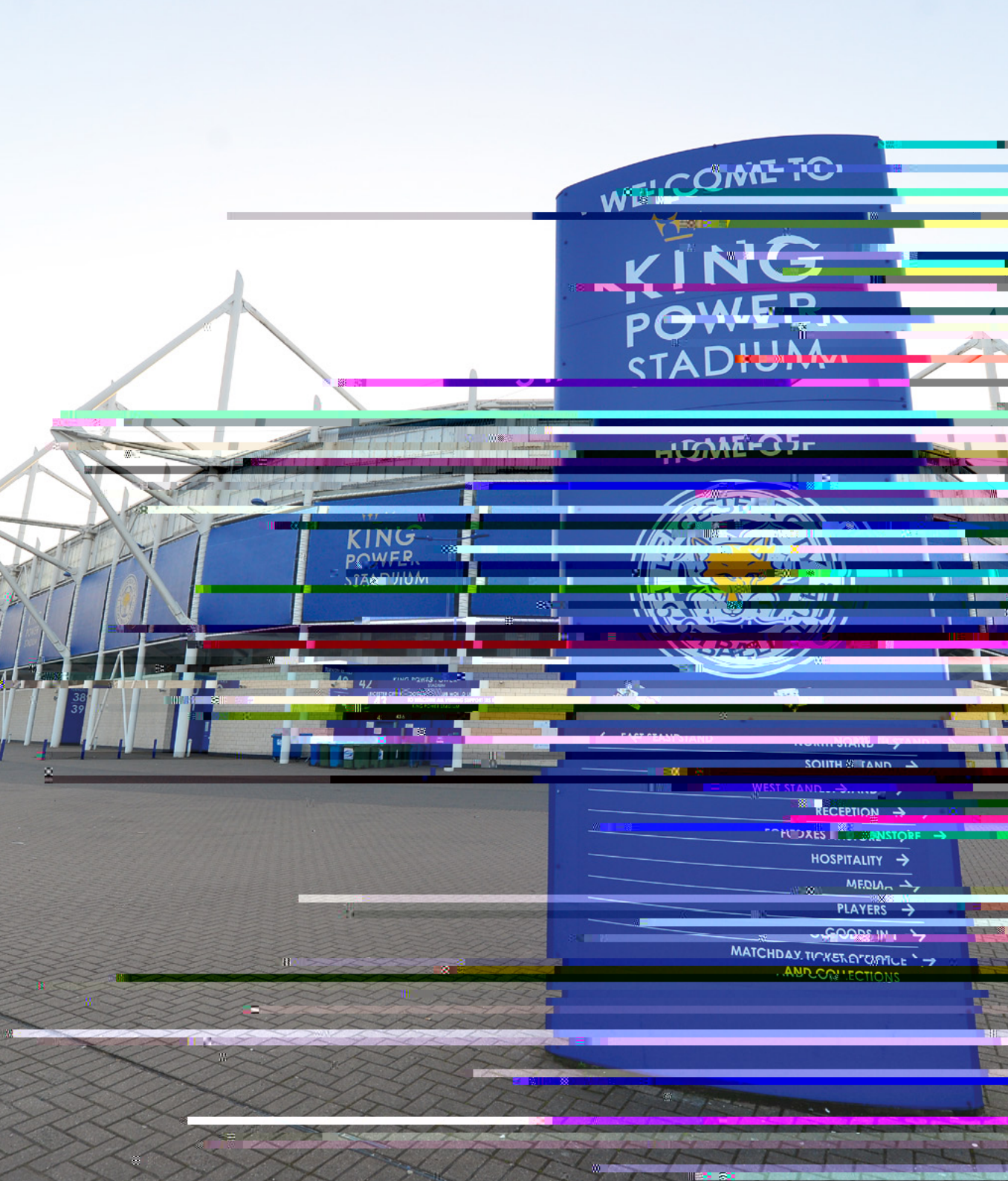
ROLLS-ROYCE

Rolls-Royce is Derby's largest private sector employer with around 12,000 staff working in the city. Two Rolls-Royce businesses are located in Derby. Its Civil Aerospace division designs, develops, tests and manufactures the Trent family of aero engines, which are supplied to airline customers all over the globe. Meanwhile, the firm's Defence division manufactures nuclear power plants for Royal Navy submarines. Rolls-Royce has been in Derby for over 100 years, beginning by making the eponymous cars before switching to aero engine production. Today, the Civil Aerospace business makes up the largest proportion of the Rolls-Royce Group.

However, the Civil Aerospace business has been severely affected in recent months by the impact of the pandemic on the airline sector. It announced a plan to reorganise this section of the business and reduce costs by making 9000 staff redundant, which it expects to save £1.3bn annually. Around 3000 job losses are expected in the UK, with 1500 to go in the East Midlands region during 2020 and with knock-on effects on its supply chain companies.

Rolls-Royce is aiming for net-zero carbon emissions worldwide by 2050 and plans to expand its research and development and product innovation in clean energy and propulsion over this period through hybrid electric, lower carbon alternative fuels and engine efficiency. Target sectors include aviation, shipping, rail, and power generation.

/500



LEICESTER CITY FOOTBALL CLUB

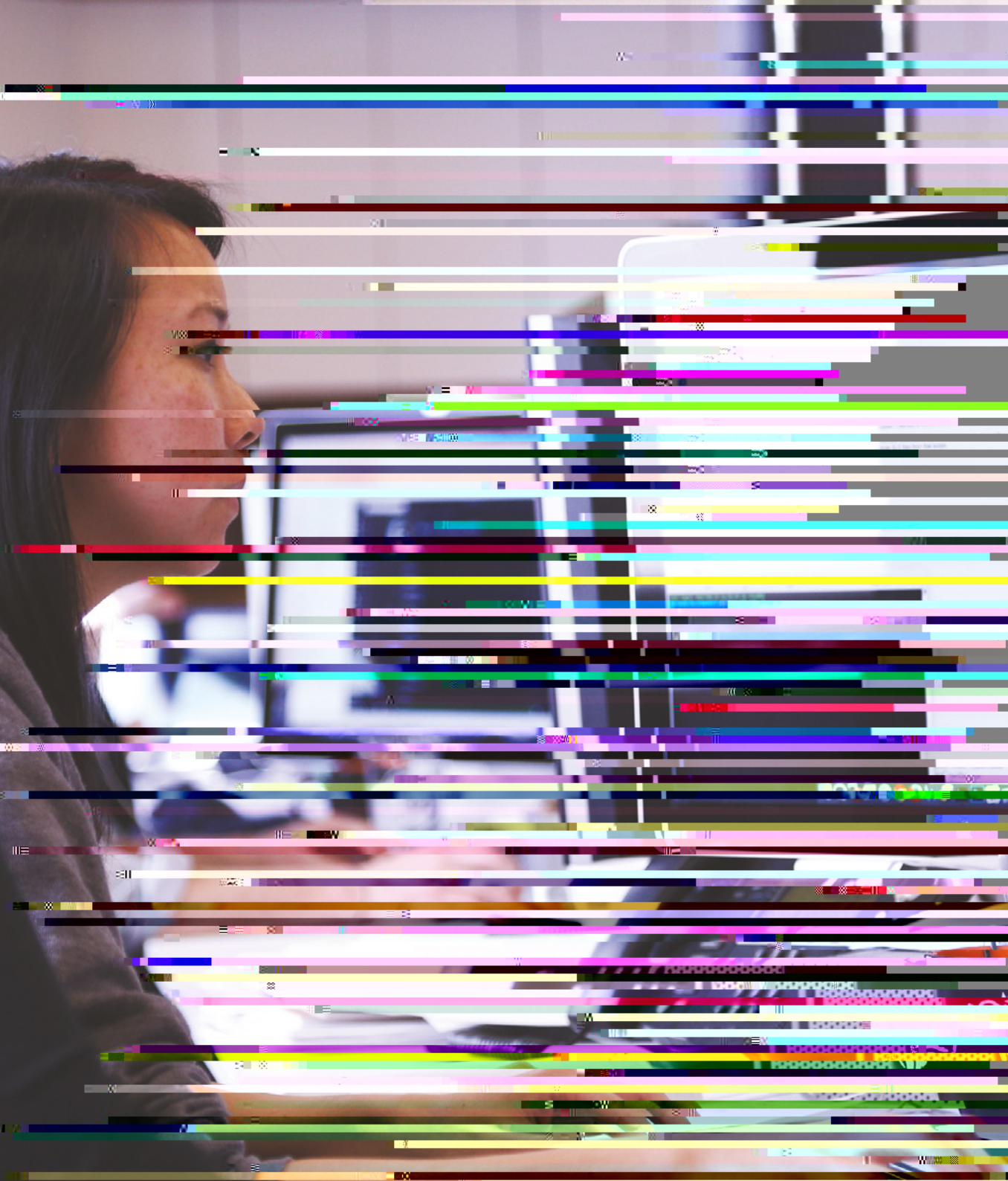
Leicester City Football Club (F.C) has an illustrious history in English football spanning 135 years. From the first match in 1884 as Leicester Fosse, its rebirth as Leicester City Football Club in 1919, to being crowned English champions of the Premier League for the first time ever in 2016.

The club has overcome many challenges along the way. In 2002, the new Walker's Stadium became the home of Leicester City Football Club. A period of relegation from Division One and administration followed by a takeover in 2007 preceded its acquisition by Thai-based consortium Asian Football Investments (AFI), led by King Power's Khun Vichai Srivaddhanaprabha, in 2010. This marked a turnaround in their fortunes and in 2014 they won the English Football league Championship. The tragic death of chairman Vichai Srivaddhanaprabha in a helicopter crash outside the ground in October 2018 shook the club and the city. However his son Aiyawatt Srivaddhanaprabha succeeded him as Chair and management of the club continues to be highly successful.

Leicester City FC responded effectively to the COVID-19 lockdown since professional football was suspended in England, at which stage they were 3rd in the Premier League. During the lockdown, training continued and supporters could obtain ticket refunds or donate to the Vichai Srivaddhanaprabha Foundation, with over £80,000 donated to the Leicester Royal Infirmary for the refurbishment of the Kinmonth Unit for head and neck injuries. Playing resumed from 20 June with an intensive series of 12 matches through to July 26. They finished in 3rd place in the interrupted Premier League 2019-20 season.

Leicester City FC are continuing their major investment in the club's future plans. Their new training ground in Seagrave opened in June with an investment of £13 million in the 180 acre site at Seagrave. Their plans to increase capacity at the King Power Stadium in Leicester, adding up to 30% to its capacity to around 42,000 seats, continue. This is alongside the major investments in the team itself.

/500



PROACT IT UK LIMITED

PROACT is Europe's leading independent data centre

FUTURE PROSPECTS

00-1

The pandemic and lockdown have had massive effects on the East Midlands economy in a short period from March to June 2020, such that predictions and strategies which predate it may have less validity now. GDP in Quarter 2 of 2020 (April-June) fell by 20% and business confidence remains exceptionally low as a result of the closed economy and its after effects.

There is extensive analysis and forecasting of the timing and nature of the recovery from the pandemic. Members of the Top 500 companies will play a significant role in creating this, though a number have been seriously affected. Analysis by the Centre for Cities and DMU suggests that aviation, automotive manufacturing, travel and tourism, and creative and cultural sectors are highly vulnerable, and the region has seen the effects of this. Wholesale, retail, construction and passenger transport are seen as vulnerable, and again this pattern is apparent in the region. However, health businesses, logistics, ICT and professional services sectors may anticipate higher demand.

00-2

Despite this unprecedented and exceptionally serious position, companies, industries and communities are planning their future strategies in a post-pandemic world. There is a strategic vision from Rolls-Royce to reposition itself in the clean energy and propulsion markets, for example, and there will be major changes in other sectors. These require strategic thinking, innovation and significant investments to succeed. This in turn requires confidence in the future outlook on markets and the economy. There continue to be major uncertainties regarding the UK trading relationship with the EU which affects the automotive sector and others. Retailing has been hugely affected and the clear trend is towards continued growth in online shopping. Retailers with many physical stores will need to adjust to this, and a reduction in the numbers employed in the retail sector seems likely.

00-3

The East Midlands as a region needs to make more effective use of business intelligence to support future economic growth, and the Top 500 partners will continue to work across key organisations in the region to achieve this.

As noted, historic data may well not be a reliable guide to the future. There is rapid change in the business and economic landscape, and this is being driven by a number of factors such as the impact of the pandemic, the changing nature of business, and the need for firms to respond to changing market conditions and the impact of the pandemic.

EU of T d alable gions ind (03 in sport futur. 33 etion, futuom to 20 (T) 20 (he E

THE EAST MIDLANDS TOP 500 COMPANIES 2020

	COMPANY	TURNOVER GBP £'000	No. EMPLOYEES	R/O POSTCODE
1	BOOTS UK LIMITED www.boots.com	6,837,000	40,088	NG2 3AA
2	SYTNER GROUP LIMITED www.sytner.co.uk	5,562,589	8,928	LE19 1ST
3	BARRATT DEVELOPMENTS PLC www.barrattdevelopments.co.uk	4,874,800	6,315	LE67 1UF
4	PENDRAGON PLC www.pendragonplc.com	4,739,100	9,989	NG15 ODR
5	NEXT PLC www.nextplc.co.uk	4,055,500	43,970	LE19 4AT
6	ROLLS-ROYCE [GROUP] www.rolls-royce.com	3,708,042	14,000+	DE24 8BJ;
7	SPORTS DIRECT INTERNATIONAL PLC www.sportsdirectplc.com	3,359,500	17,559	NG20 8RY
8	TOYOTA MOTOR MANUFACTURING (UK) LIMITED www.toyotauk.com	2,177,792	2,698	DE1 9TA
9	BAO-BAT TfSQq 1 045 (,)62 (7)62 (92)]TJ9.469 0 Td[(5Tf-02)e,7.O,-21 (G (U)-4ESITED 21.2INA41 0 Td()15toyotauk.ecobatg]TJ71up1 Tf29.626 0.714 Td(351 214 (7)41 (7)000)]TJ9.			

	COMPANY	TURNOVER GBP £'000	No. EMPLOYEES	R/O POSTCODE		COMPANY	TURNOVER GBP £'000	No. EMPLOYEES	R/O POSTCODE
49	REFRESCO DRINKS UK LIMITED www.refresco.com	269,726	1,121	DE74 2FJ	63	SMARTWAY PW. HOLDINGS LIMITED			
50	SOFIDEL UK LIMITED www.sofidel.com	263,469	503	LE5 1TZ					
51	VISION EXPRESS (UK) LIMITED www.visionexpress.com	261,954	3,375	NG11 6NZ					
52	VAILLANT GROUP UK LIMITED www.vaillant.co.uk	261,335	588	DE56 1JT					
53	CROMWELL TOOLS LIMITED www.cromwell.co.uk	247,201	1,083	LE18 1AT					
54	WHITE CAPSTAN LIMITED	245,169	2,391	NG1 6FG					
55	AMTRUST EUROPE LIMITED www.amtrusteurope.com	242,034	254	NG20 8RY					
56	METHODIST HOMES www.mha.org.uk	229,430	5,803	DE1 2EQ					
57	EUROCELL PLC www.eurocell.co.uk	224,906	1,496	DE55 4RF					
58	PATTONAIR (DERBY) LIMITED www.pattonair.com	221,153	580	DE24 8UJ					
59	DRIVE HOLDINGS 2015 LIMITED	214,685	1,051	DE74 2TU					
60	AIRLINE INVESTMENTS LIMITED	214,685	1,051	DE74 2TU					
61	FLOGAS BRITAIN LIMITED www.flogas.co.uk	213,364	955	LE7 1PF					
62	TOPPS TILES PLC www.toppstiles.co.uk	211,848	2,030	LE19 1SU					

	COMPANY	TURNOVER GBP £'000	No. EMPLOYEES	R/O POSTCODE		COMPANY	TURNOVER GBP £'000	No. EMPLOYEES	R/O POSTCODE
245	PAYNES GARAGE(HOLDINGS) LIMITED www.paynes-garages.co.uk	50,197	137	LE10 3ED	259	JDP FURNITURE GROUP LIMITED www.jdp-furniture-group.co.uk	48,371	662	NG10 4HS
246	FUTURES HOUSING GROUP LIMITED www.futureshg.co.uk	50,195	282	DE5 3SW	260	ARMITAGES PET PRODUCTS LIMITED www.armitages.co.uk	48,304	126	NG4 2BA
247	THE BARCODE WAREHOUSE GROUP LIMITED www.thebarcodewarehouse.co.uk	50,086	226	NG24 2DX	261	FUTABA INDUSTRIAL U.K. LTD. www.futabaindustrialuk.co.uk	48,235	228	DE65 5BT
248	BRIDGEBANK LIMITED www.bridgework.com	49,868	40	NG18 4TB	262	GL INDUSTRIAL SERVICES UK LTD www.dnvgl.com	48,148	333	LE11 3GR
249	H.W. COATES (HOLDINGS) LIMITED www.hwcoates.co.uk	49,825	316	LE17 4HD	263	DOOR-STOP INTERNATIONAL LIMITED www.door-stop.co.uk	48,117	420	LE11 3GR
250	BENOY LIMITED www.benoy.com	49,655	489	NG24 1EH					
251	TMS LIMITED www.tmsmotorgroup.co.uk	49,644	91	LE10 0NF					
252	MICROLISE HOLDINGS LIMITED www.microlise.com	49,513	475	NG16 3AG					
253	PUKKA PIES LIMITED www.pukkapies.co.uk	49,383	334	LE7 1LD					
254	CAUNTON HOLDINGS LIMITED www.caunton.co.uk	49,252	245	NG16 3SU					
255	REMPLOY LIMITED www.remploy.co.uk	49,201	873	LE19 1WZ					
256	HORIBA MIRA LIMITED www.horiba-mira.com	48,728	443	CV10 0TU					
257	CAMBRIDGE & COUNTIES BANK LIMITED www.ccbank.co.uk	48,726	125	LE1 6TE					
258	WHITEMEADOW GROUP HOLDINGS LIMITED www.whitemeadow.com	48,390	473	NG17 1JU					

	COMPANY	TURNOVER GBP £'000	No. EMPLOYEES	R/O POSTCODE
273	GAMSTON KENNELS & FARMS LIMITED www.petproducts.co.uk	46,491	210	NG2 6NQ
274	WESTBROOK HOLDINGS LIMITED www.wbri.co.uk	46,472	25	S18 1LY
275	WILDGOOSE CONSTRUCTION LIMITED www.wildgooseconstruction.co.uk	45,607	86	DE55 7BY
276	PERFORMANCE HEALTH INTERNATIONAL LIMITED www.performancehealth.com	45,320	177	NG17 2HU
277	PICSOLVE HOLDINGS LIMITED	45,055	1,407	DE24 8AN
278	RESEARCH GARAGE GROUP LIMITED www.peugeot.co.uk	44,969	115	LE10 1HL
279	ANAND INTERNATIONAL LIMITED www.anand.co.uk	44,727	34	LE19 1WH
280	ENVA ENGLAND LIMITED www.wastecycle.co.uk	44,649	311	NG4 2JT
281	BOWRING TRANSPORT LIMITED www.bandbtractors.co.uk	44,499	207	NG20 0EP
282	SHAKESPEARE PHARMA LTD www.shakespearepharma.com	44,320	23	DE65 5UR
283	DIAM UK LTD www.diam-international.com	44,072	220	LE11 5XS
284	NATUREX LIMITED www.naturex.com	43,752	99	DE12 6JX
285	QUOTIENT SCIENCES LIMITED www.quotientciences.com	43,379	330	NG11 6JS
286	AMETEK AIRTECHNOLOGY GROUP LIMITED www.ametektms.com	43,356	256	LE4 9JQ

	COMPANY	TURNOVER GBP £'000	No. EMPLOYEES	R/O POSTCODE		COMPANY	TURNOVER GBP £'000	No. EMPLOYEES	R/O POSTCODE
329	BREASLEY PILLOWS LIMITED(THE) www.breasley.co.uk	36,002	218	DE4 4AA	343	CMS CEPCOR (HOLDINGS) LIMITED	34,705	86	LE67 3AP
330	PEOPLE POTENTIAL POSSIBILITIES www.p3charity.com	35,911	590	DE7 8HU	344	KCT HOLDINGS LIMITED www.technicut.ltd.uk	34,625	218	LE12 8LD
331	LHOIST UK LIMITED www.lhoist.co.uk	35,645	79	SK17 0EL	345	BELLE ENGINEERING (SHEEN) LIMITED www.belle-group.co.uk	34,563	169	SK17 0EU
332	MICHAEL PAVIS LIMITED www.michaelpavisltd.co.uk	35,595	55	NG1 4JA	346	LONGCLIFFE GROUP LIMITED www.longcliffe.co.uk	34,545	183	DE4 4BZ
333	TECHNOLOG HOLDINGS LTD www.technolog.com	35,393	276	DE4 4FY	347	CLOSE BROTHERS VEHICLE HIRE LIMITED www.closebrothersvehiclehire.co.uk	34,412	64	DE7 4QU
334	ARC PROPERTY SERVICES PARTNERSHIP LTD www.scapegroup.co.uk	35,248	83	NG1 5AT	348	SJC 15 LIMITED	34,350	380	NG1 1PB
335	OADBY PLASTICS LIMITED www.oadbyplastics.co.uk	35,201	237	LE3 6NN	349	SYNCREON AUTOMOTIVE (UK) LTD. www.syncreon.com	34,267	491	LE10 3BO
336	SKYMARK PACKAGING INTERNATIONAL LIMITED www.skymark.co.uk	35,048	239	DE7 8EF	350	MOTORLINE DIRECT LIMITED www.motorlinedirect.co.uk	34,251	32	NG1 4JA
337	EUROKEY RECYCLING LIMITED www.eurokeyrecycling.com	35,034	52	LE19 1RJ	351	COOPER PARRY LLP www.cooperparrycf.com	34,246	372	DE74 2SA
338	UK EGG CENTRE LIMITED www.ukeggcentre.com	34,992	10	S41 9QD	352	CMC CHESTERFIELD LIMITED www.cmc bikes.com	34,202	161	S45 9PD
339	FUNERAL PARTNERS LIMITED www.funeralpartners.co.uk	34,771	547	NG1 6HH	353	CEMA GROUP LTD www.cemaltd.co.uk	34,155	351	NG1 5GF
340	URGO LIMITED www.urgo.co.uk	34,764	163	LE12 9JJ	354	EFFECTIVE ENERGY GROUP LTD www.effective-energy.co.uk	34,061	73	LE4 1AA
341	ART SYSTEMS LIMITED www.artsystems.co.uk	34,758	66	NG8 4GP	355	ARCTICS LIMITED www.igloostaffingsolutions.com	34,044	49	LE10 3BE
342	GREENE TWEED & CO LIMITED www.gtweed.com	34,753	134	NG11 6JS	356	PRECI-SPARK LIMITED www.preci-spark.uk.com	33,975	461	LE7 1HN

@dmuleicester



@dmuleicester

De Montfort University

@dmuleicester



De Montfort University

@dmuleicester

Centre for Enterprise & Innovation



@CEntIntDMU

dmu.ac.uk